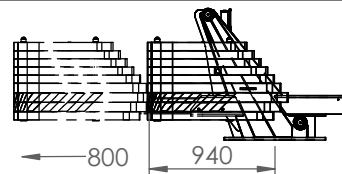
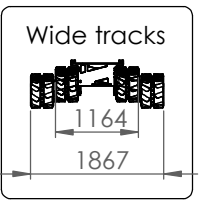
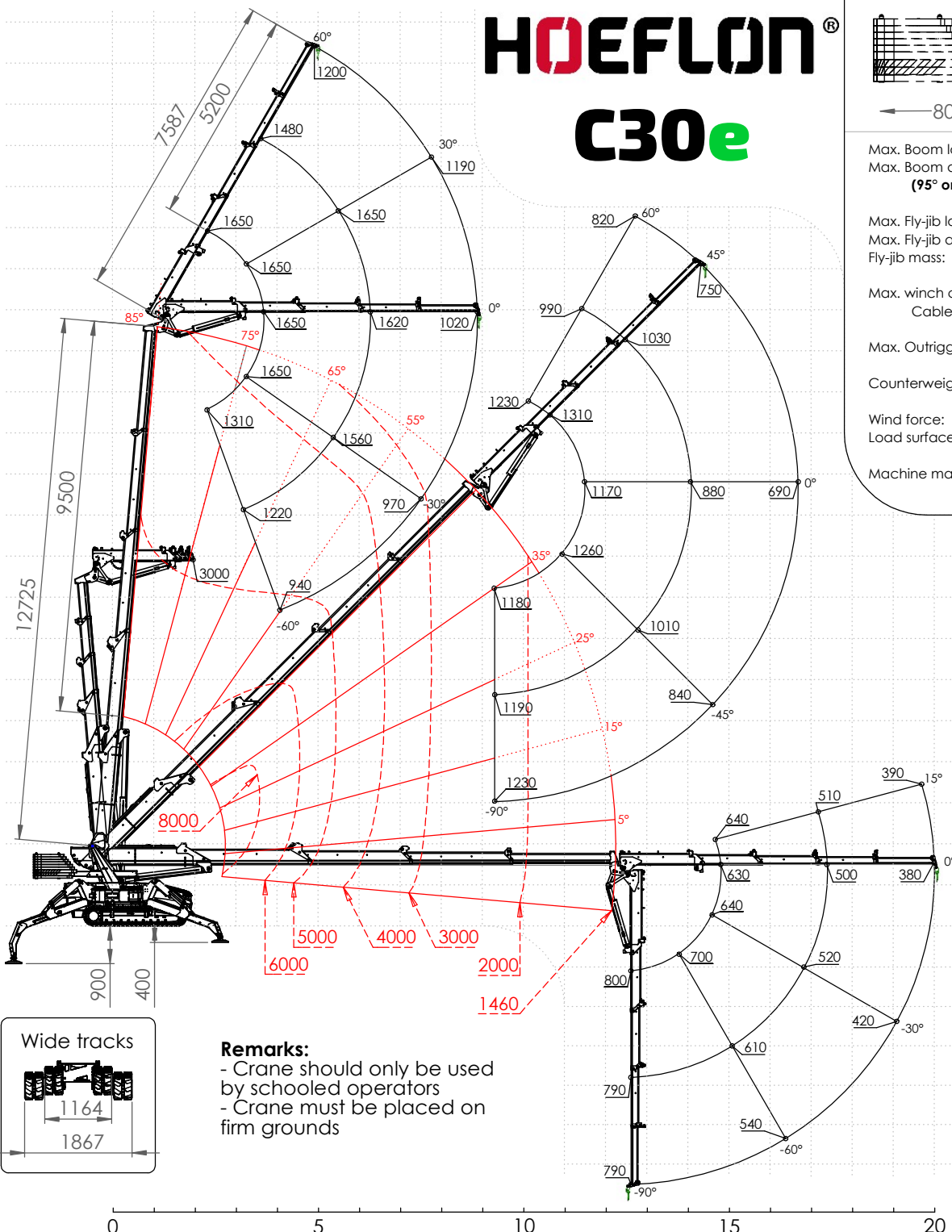
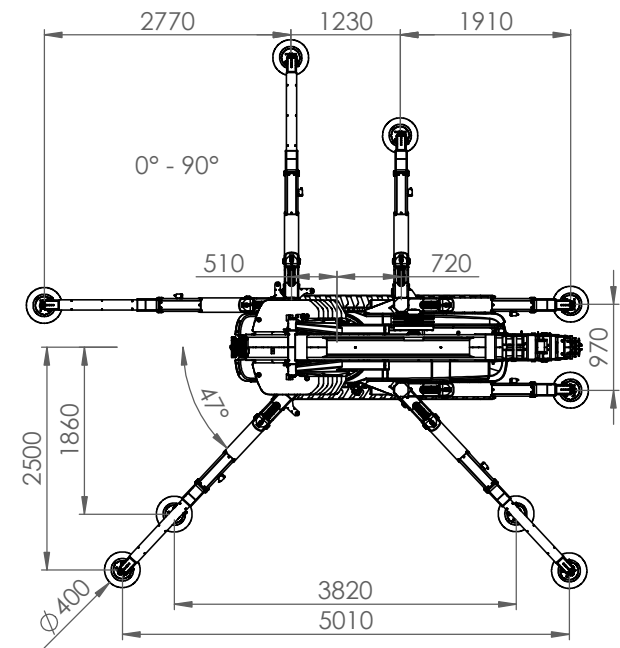


HOEFLON® C30e



- Max. Boom load: 10.000 kg
- Max. Boom angle: 85°
(95° only at boomlength <6.5 m)
- Max. Fly-jib load: 3.000 kg
- Max. Fly-jib angle: 60°
- Fly-jib mass: 602 kg
- Max. winch cable force: 1.600 kg
- Cable length: 80 m
- Max. Outrigger force: 8.900 kg
- Counterweight mass: 2.280 kg
- Wind force:
Load surface 6 (40 km/h)
1,2 m2/ton
- Machine mass, without Jib: 8.250 kg

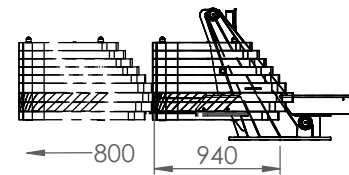


Remarks:
 - Crane should only be used by schooled operators
 - Crane must be placed on firm grounds

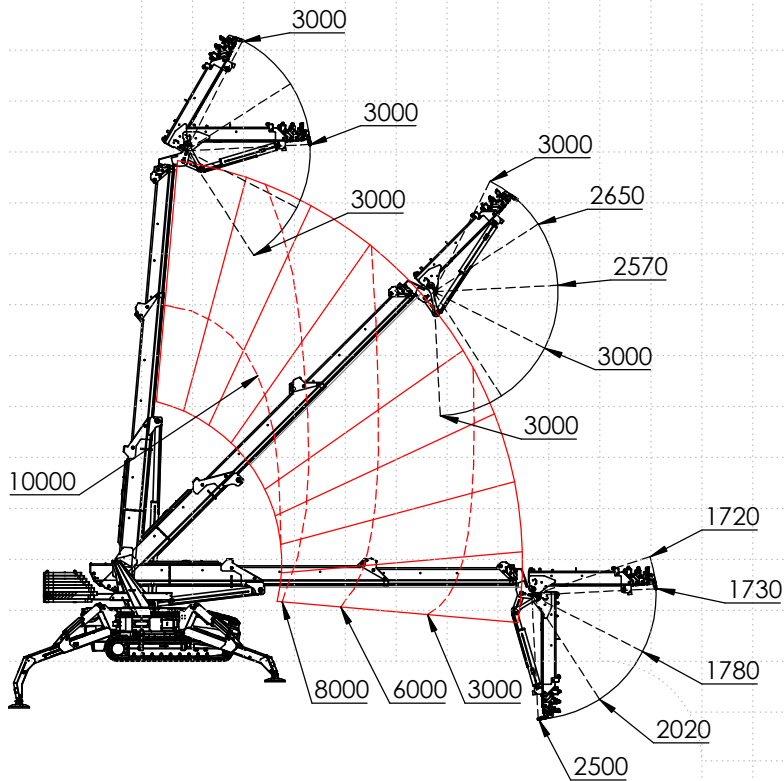
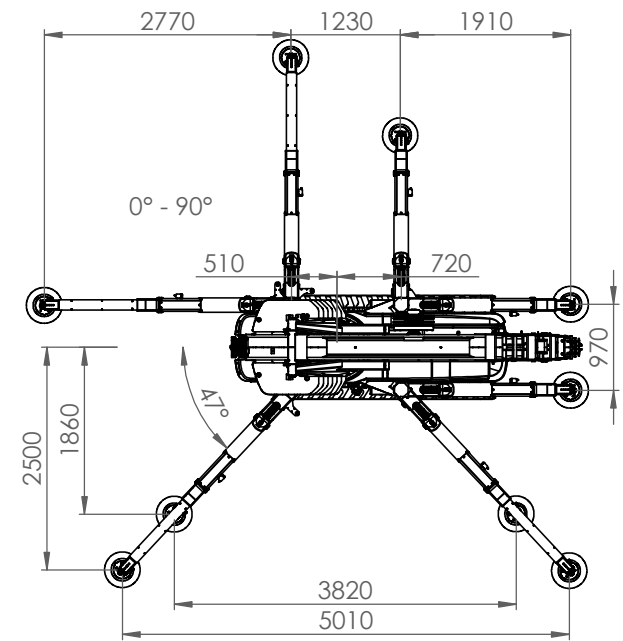
		LOAD FLYJIB [kg]								
Boom Angle	Length Jib	0%			50%			100%		
		0%	50%	100%	0%	50%	100%	0%	50%	100%
85°	60°	2620	2410	1790	2620	2410	1790	1650	1480	1200
	30°	3000	1980	1190	3000	1980	1190	1650	1650	1190
	0°	3000	1620	1020	3000	1620	1020	1650	1620	1020
	-30°	2130	1560	970	2130	1560	970	1650	1560	970
	-60°	1310	1220	940	1310	1220	940	1310	1220	940
55°	60°	2620	2410	1790	2620	2410	1790	1990	1630	1290
	30°	3000	1950	1190	2670	1650	1170	1750	1190	890
	0°	3000	1650	1040	2400	1450	1020	1610	1070	790
	-45°	1570	1390	920	1570	1390	920	1570	1290	920
	-90°	1180	1190	1230	1180	1190	1230	1180	1190	1230
45°	45°	3000	2460	1440	2700	1780	1310	1310	1030	840
	30°	3000	1950	1190	2420	1530	1110	1240	940	750
	0°	3000	1640	1040	2190	1360	970	1170	880	690
	-45°	1570	1390	920	1570	1390	920	1260	1010	840
	-90°	1180	1190	1230	1180	1190	1230	1180	1190	1230
25°	30°	3000	1950	1190	1900	1380	1030	770	620	510
	15°	3000	1710	1070	1820	1290	930	750	590	470
	0°	3000	1630	1020	1780	1240	900	740	580	460
	-45°	1570	1390	920	1570	1390	920	780	650	550
	-90°	1180	1190	1230	1180	1190	1230	950	950	950
-5°	10°	3000	1660	1040	1650	1190	910	640	510	390
	0°	3000	1620	1020	1640	1170	900	630	500	380
	-30°	2130	1750	970	1690	1250	970	640	520	420
	-60°	1310	1220	940	1310	1220	940	700	610	540
	-90°	1180	1190	1230	1180	1190	1230	800	790	790

HOEFLON[®]

C30e

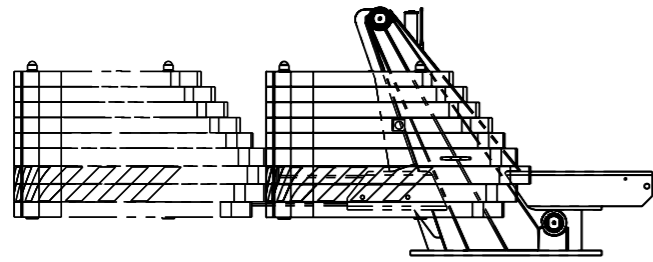


Max. Boom load:	10.000 kg
Max. Boom angle:	85°
Max. Fly-jib load:	3.000 kg
Max. Fly-jib angle:	60°
Fly-jib mass:	602 kg
Max. Outrigger force:	8.900 kg
Counterweight mass:	2.280 kg
Wind force:	6 (40 km/h)
Load surface	1,2 m ² /ton
Machine mass, without Jib:	8.250 kg



< 1,16 m >	+ 0.18 m	+ 0.40 m
< 1,86 m >	+ 0.70 m	+ 0.90 m

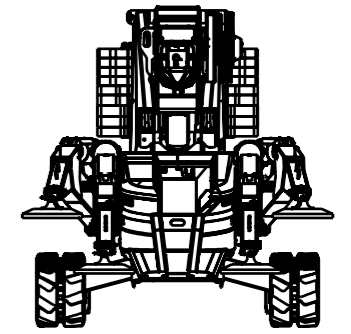
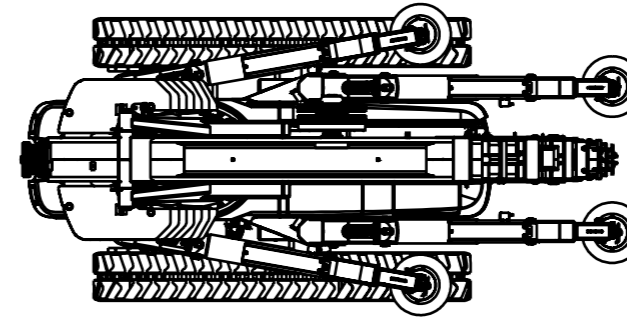
0 5 10 15 20 m



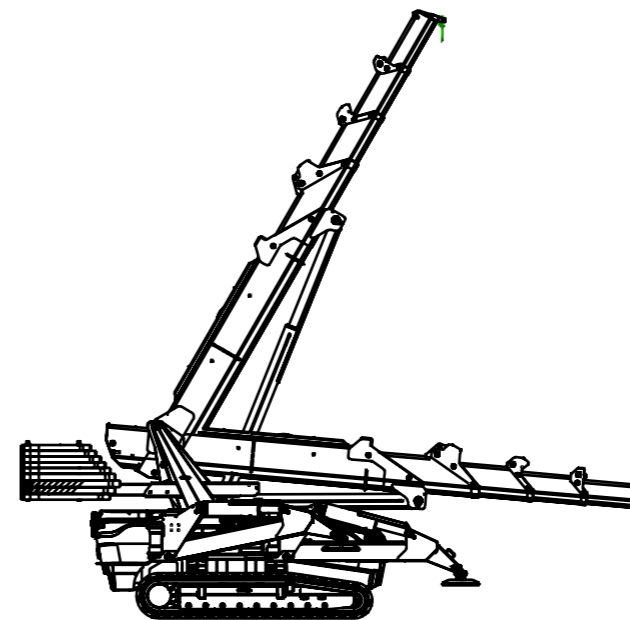
HOEFLON[®]

C30e

PC



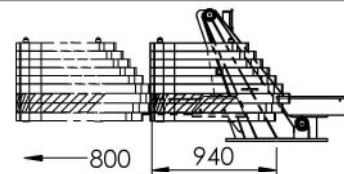
LOAD FLYJIB [kg]			
Position	Front	Side	Rear
1	1000	1000	300
2	1000	1000	250
3	1000	860	190
4	1000	680	140
5	1000	740	150
6	1000	580	110
7	1000	790	150
8	1000	630	110
9	1000	1000	210
10	1000	880	170
11	1000	1000	410
12	1000	1000	410
13	1000	320	0
14	860	260	0
15	1000	310	0
16	830	250	0
17	1000	320	0
18	900	270	0
19	1000	400	0
20	1000	300	0
21	1000	350	0
22	1000	590	0
23	1000	590	0



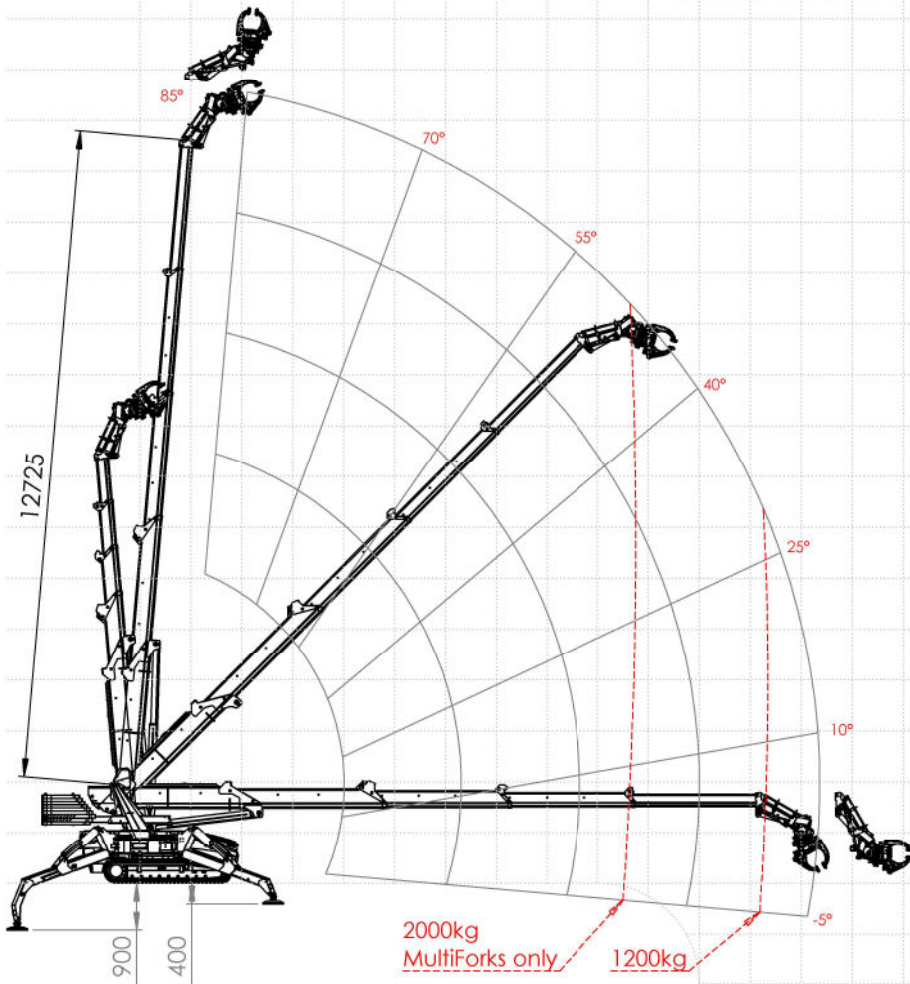
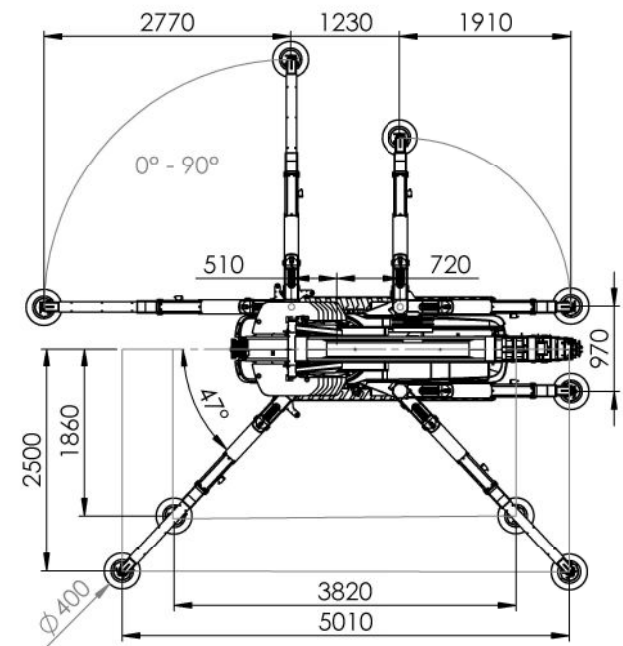
LOAD BOOM [kg]			
Position	Front	Side	Rear
1	3000	3000	3000
2	2900	3000	1780
3	3000	3000	2230
4	3000	1830	1070
5	3000	3000	1700
6	2730	1360	800
7	3000	2660	1510
8	2340	1180	690
9	3000	2690	1520
10	2310	1170	680
11	3000	2780	1580
12	2360	1190	700
13	3000	1480	870

HOEFLON[®]

C30e



Max. Boom load:	9000 kg
Max. Boom angle:	85°
(95° only at boomlength <6.5 m)	
Max. Fly-jib load:	3000 kg
Max. Fly-jib angle:	60°
Fly-jib mass:	725 kg
Max. winch cable force:	1000 kg
Cable length:	40 m
Max. Outrigger force:	8900 kg
Counterweight mass:	2300 kg
Wind force:	6 (40 km/h)
Load surface	1,2 m ² /ton
Machine mass, without Jib:	8000 kg



Remarks:
 - Crane should only be used by schooled operators
 - Crane must be placed on firm grounds

0 5 10 15 20 m